

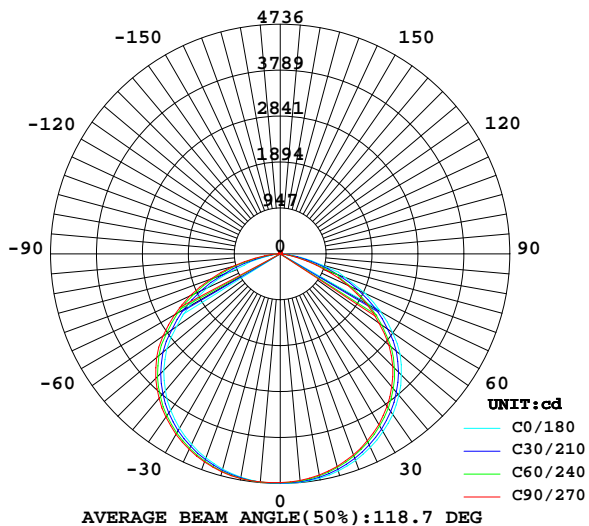
LUMINAIRE PHOTOMETRIC TEST REPORT

Report number:

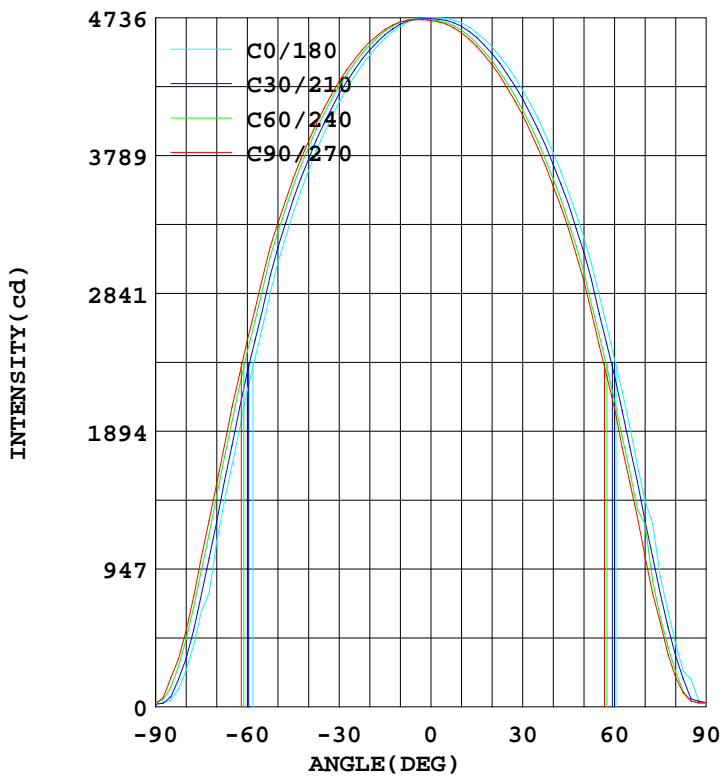
MANUFACTURER:	Address:	
NAME:	TYPE:	WEIGHT:
SPECIFICATION:	DIMENSION:	SERIAL No.:

DATA OF LAMP		Imax(cd)	4736	S/MH(C0/180)	1.30
MODEL		EFFICIENCY(%)	100.0	S/MH(C90/270)	1.35
NOMINAL POWER(W)	100	TOTAL FLUX(lm)	14338	Voltage(V)	221.8
RATED VOLTAGE(V)	222	EFFICIENCY(lm/W)	142.9	Current(A)	0.464
NOMINAL FLUX(lm)	14337.8	η up(%)	1.7	Power(W)	100.3
LAMPS QUANTITY	1	η down(%)	98.3	Power Factor(PF)	0.973
TEST VOLTAGE(V)	221.9	Effictive Flux(lm)	13875.0	EEL	0.098

LUMINOUS INTENSITY DISTRIBUTION



LUMINOUS INTENSITY DISTRIBUTION



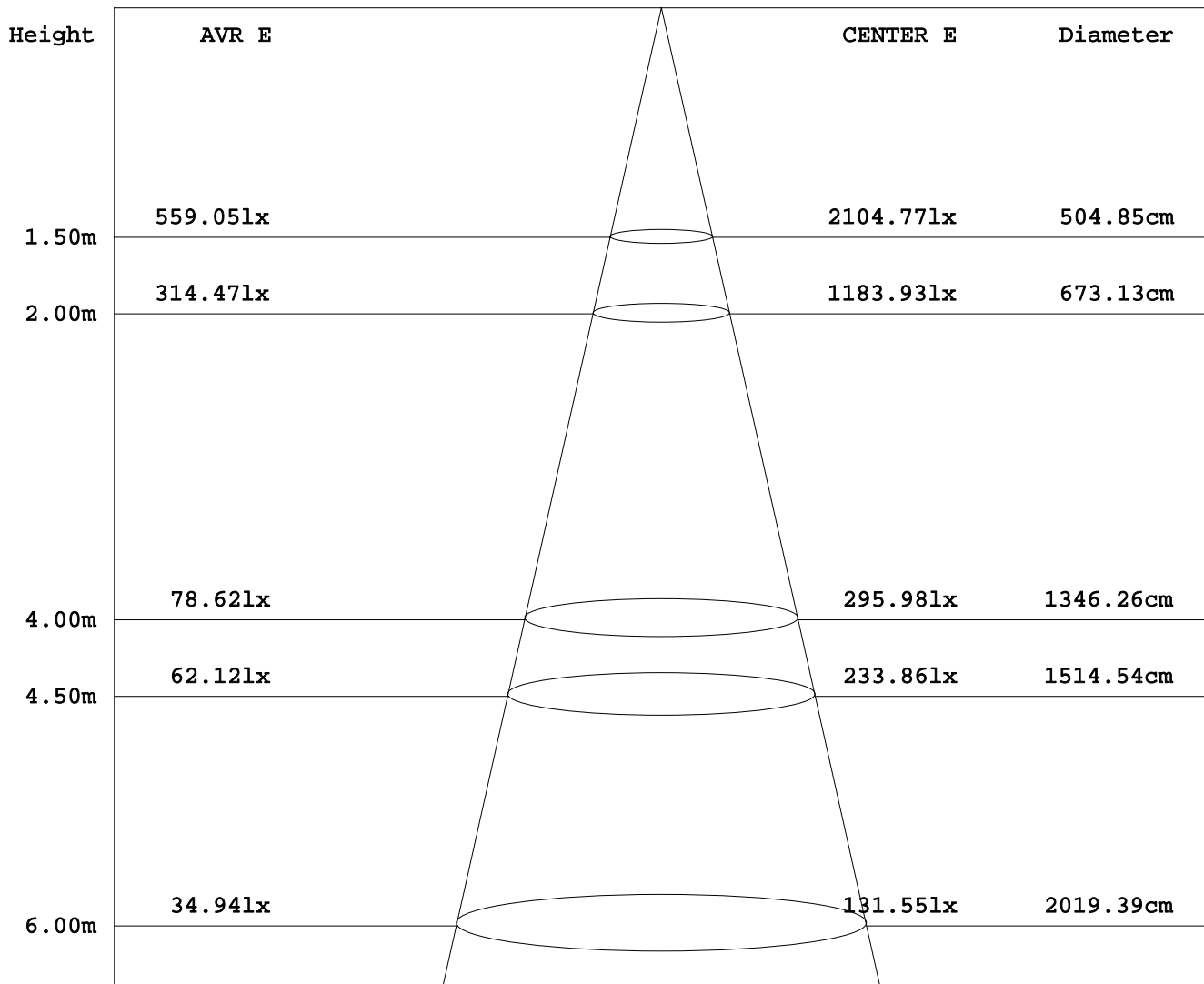
Test System:HOPOO HPG1800
 Temperature:25.3DEG
 Operators:
 Test Date:2016年07月28日

Test Set: 8.0deg/s C-Gamma (TYPE C)
 Humidity:65.0%
 Test Distance:6.000 m
 Remarks:

AVERAGE AND CENTER E Figure

Report number:

MANUFACTURER:	Address:	
NAME:	TYPE:	WEIGHT:
SPECIFICATION:	DIMENSION:	SERIAL No.:



Angle:118.6deg

Test System:HOPPO HPG1800
 Temperature:25.3DEG
 Operators:
 Test Date:2016年07月28日

Test Set: 8.0deg/s C-Gamma (TYPE C)
 Humidity:65.0%
 Test Distance:6.000 m
 Remarks:

HONGPU GONIOPHOTOMETERS SYSTEM TEST REPORT

ZONAL FLUX DIAGRAM

Report number:

MANUFACTURER:	Address:	
NAME:	TYPE:	WEIGHT:
SPECIFICATION:	DIMENSION:	SERIAL No.:

γ	C0	C45	C90	C135	C180	C225	C270	C315	γ	Φ zone	Φ total
5.0	4724	4725	4722	4711	4730	4711	4693	4683	0- 5	112.7	112.7
10.0	4677	4697	4708	4696	4701	4662	4632	4622	5- 10	335.7	448.4
15.0	4596	4632	4656	4645	4633	4579	4539	4527	10- 15	550.0	998.5
20.0	4479	4532	4569	4558	4535	4464	4412	4400	15- 20	749.1	1748
25.0	4331	4399	4448	4437	4402	4315	4251	4242	20- 25	927.6	2675
30.0	4157	4240	4300	4290	4237	4138	4067	4055	25- 30	1080	3756
35.0	3941	4041	4111	4105	4045	3929	3840	3833	30- 35	1202	4958
40.0	3684	3804	3887	3881	3808	3677	3576	3567	35- 40	1288	6245
45.0	3398	3535	3633	3627	3533	3391	3283	3267	40- 45	1332	7577
50.0	3055	3212	3326	3322	3228	3057	2929	2915	45- 50	1331	8908
55.0	2610	2799	2950	2953	2832	2628	2484	2470	50- 55	1273	10181
60.0	2180	2373	2522	2526	2389	2193	2056	2023	55- 60	1155	11336
65.0	1662	1879	2059	2070	1928	1703	1544	1521	60- 65	989.8	12325
70.0	1139	1364	1537	1552	1418	1268	1035	1008	65- 70	781.6	13107
75.0	658.7	856.6	1031	1050	893.6	695.1	576.3	539.7	70- 75	539.7	13647
80.0	253.4	401.1	528.3	559.9	436.2	296.9	203.5	200.0	75- 80	300.3	13947
85.0	46.83	101.8	198.9	200.4	192.2	49.48	39.77	34.16	80- 85	118.5	14066
90.0	23.36	23.09	22.57	34.39	23.21	26.06	28.11	25.91	85- 90	29.84	14095
95.0	24.91	21.72	18.36	21.02	23.50	27.50	30.20	28.58	90- 95	13.46	14109
100.0	27.25	24.31	21.49	23.41	27.03	30.61	33.01	31.73	95-100	14.09	14123
105.0	29.84	27.05	24.69	26.06	30.67	33.75	35.92	34.91	100-105	15.45	14138
110.0	32.65	29.79	28.04	28.87	34.02	36.70	38.98	37.83	105-110	16.67	14155
115.0	35.31	32.36	31.24	31.53	37.25	39.43	41.79	40.50	110-115	17.58	14173
120.0	37.43	34.59	33.91	33.93	39.88	41.86	43.88	42.85	115-120	18.13	14191
125.0	39.42	36.82	36.28	36.21	42.26	44.17	45.79	45.14	120-125	18.30	14209
130.0	41.29	38.89	38.44	38.35	44.31	46.20	47.55	47.14	125-130	18.14	14227
135.0	43.02	41.02	40.28	40.35	46.43	47.97	49.32	48.81	130-135	17.64	14245
140.0	45.10	43.30	42.48	42.51	48.27	49.62	50.83	50.32	135-140	16.87	14262
145.0	47.15	45.57	44.82	44.69	50.18	51.17	52.52	51.67	140-145	15.82	14278
150.0	49.35	47.77	47.19	46.85	52.12	52.86	54.21	53.24	145-150	14.53	14292
155.0	51.87	49.95	50.04	49.24	54.46	54.64	56.19	54.82	150-155	13.01	14305
160.0	54.18	51.96	52.81	51.55	56.59	56.23	58.24	56.28	155-160	11.21	14316
165.0	56.41	53.92	55.22	53.67	58.39	57.49	59.97	57.43	160-165	9.126	14326
170.0	58.42	55.72	57.56	55.52	59.86	58.23	61.09	58.21	165-170	6.757	14332
175.0	59.83	56.97	59.18	56.66	60.91	58.42	61.38	58.13	170-175	4.156	14336
180.0	60.69	57.81	60.22	57.54	61.12	58.08	61.05	57.79	175-180	1.401	14338
DEG	LUMINOUS INTENSITY:cd									UNIT:lm	

Test System:HOPPO HPG1800
 Temperature:25.3DEG
 Operators:
 Test Date:2016年07月28日

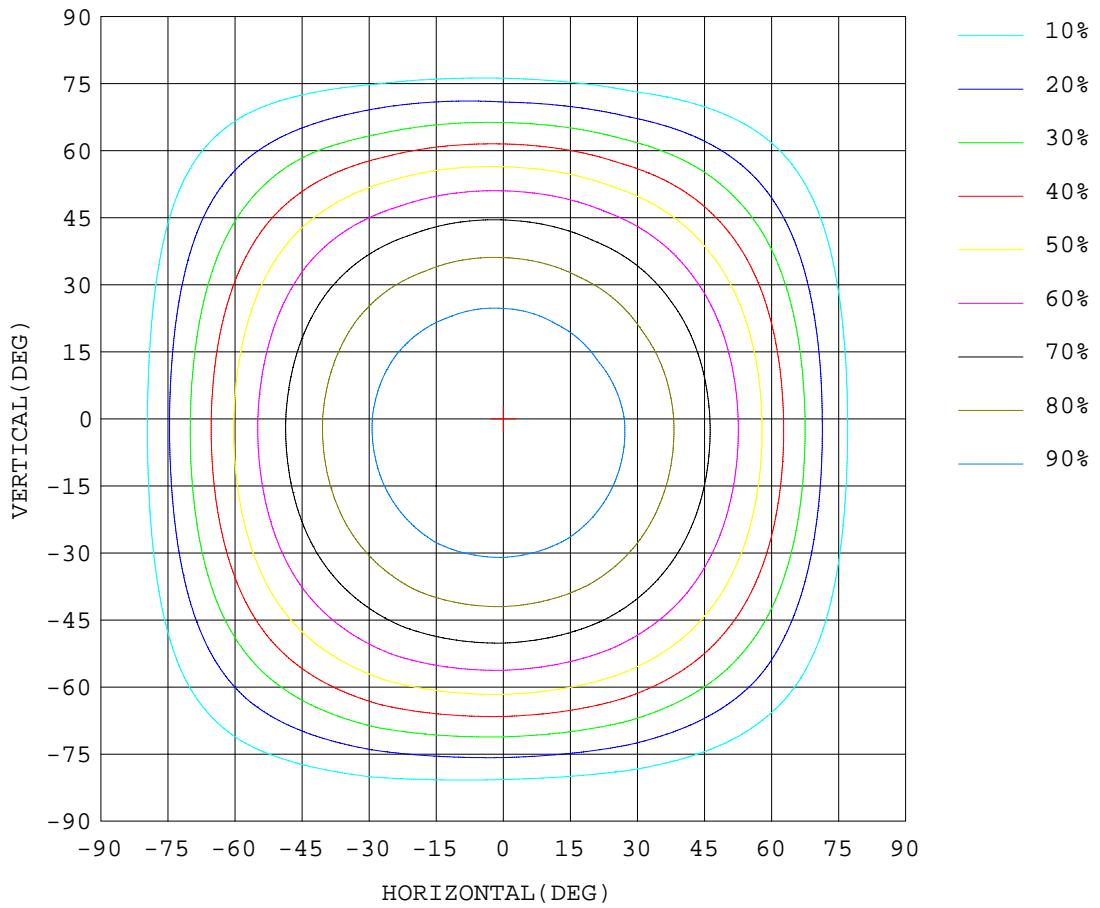
Test Set: 8.0deg/s C-Gamma (TYPE C)
 Humidity:65.0%
 Test Distance:6.000 m
 Remarks:

ISOCANDELA DIAGRAM

Report number:

MANUFACTURER:	Address:	
NAME:	TYPE:	WEIGHT:
SPECIFICATION:	DIMENSION:	SERIAL No.:

UNIT: cd



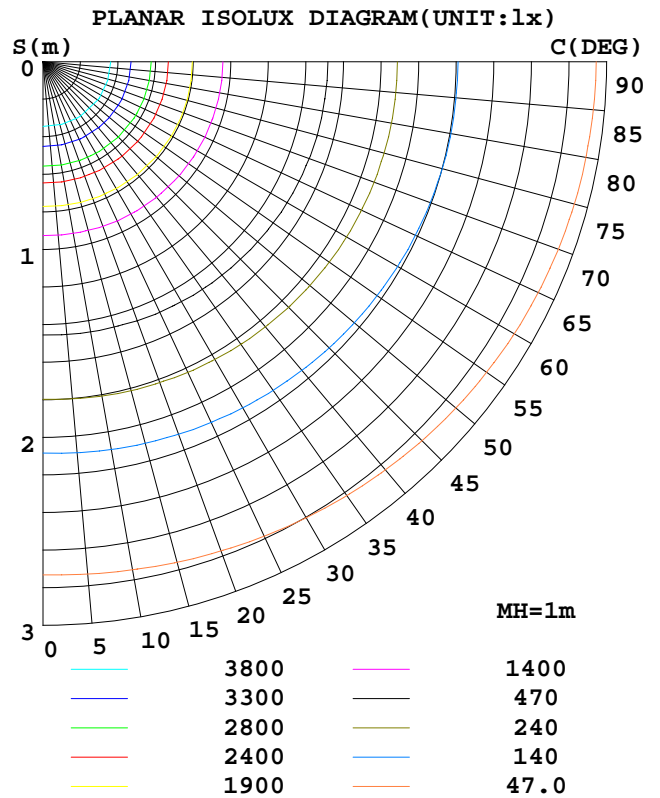
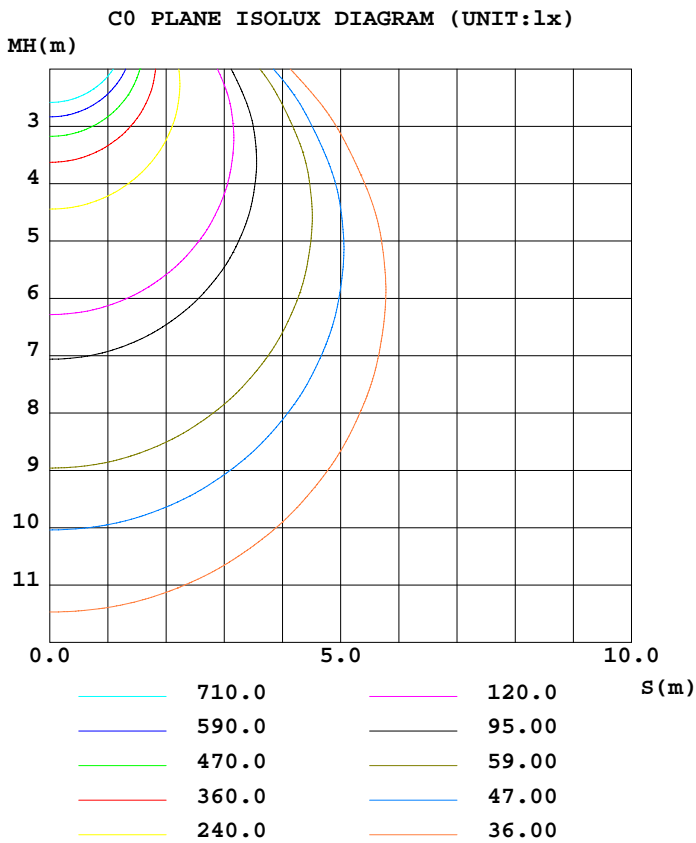
Test System:HOPOO HPG1800
 Temperature:25.3DEG
 Operators:
 Test Date:2016年07月28日

Test Set: 8.0deg/s C-Gamma (TYPE C)
 Humidity:65.0%
 Test Distance:6.000 m
 Remarks:

ISOLUX DIAGRAM

Report number:

MANUFACTURER:	Address:	
NAME:	TYPE:	WEIGHT:
SPECIFICATION:	DIMENSION:	SERIAL No.:



Test System:HOPPO HPG1800
 Temperature:25.3DEG
 Operators:
 Test Date:2016年07月28日

Test Set: 8.0deg/s C-Gamma (TYPE C)
 Humidity:65.0%
 Test Distance:6.000 m
 Remarks:

HONGPU GONIOPHOTOMETERS SYSTEM TEST REPORT

LUMINOUS DISTRIBUTION INTENSITY DATA

Report number:

MANUFACTURER:	Address:	
NAME:	TYPE:	WEIGHT:
SPECIFICATION:	DIMENSION:	SERIAL No.:

UNIT: cd

C (DEG) \ γ (DEG)	0	30	60	90	120	150	180	210	240	270	300	330
0.0	4736	4729	4722	4716	4709	4704	4736	4729	4722	4716	4709	4704
5.0	4724	4726	4725	4722	4716	4706	4730	4718	4703	4693	4685	4682
10.0	4677	4691	4703	4708	4703	4689	4701	4676	4649	4632	4620	4623
15.0	4596	4620	4644	4656	4655	4636	4633	4600	4558	4539	4521	4532
20.0	4479	4515	4550	4569	4570	4546	4535	4489	4439	4412	4395	4406
25.0	4331	4376	4422	4448	4452	4422	4402	4346	4285	4251	4234	4250
30.0	4157	4212	4268	4300	4307	4274	4237	4177	4099	4067	4039	4071
35.0	3941	4007	4075	4111	4122	4087	4045	3970	3887	3840	3818	3847
40.0	3684	3763	3844	3887	3901	3860	3808	3726	3628	3576	3550	3585
45.0	3398	3489	3581	3633	3650	3605	3533	3452	3329	3283	3239	3294
50.0	3055	3158	3266	3326	3346	3298	3228	3124	2990	2929	2888	2942
55.0	2610	2731	2867	2950	2983	2922	2832	2701	2555	2484	2441	2500
60.0	2180	2302	2443	2522	2554	2497	2389	2279	2107	2056	1983	2064
65.0	1662	1796	1962	2059	2103	2037	1928	1787	1619	1544	1488	1554
70.0	1139	1275	1453	1537	1584	1521	1418	1278	1258	1035	976	1041
75.0	659	772	941	1031	1083	1018	894	775	616	576	503	577
80.0	253	335	467	528	589	531	436	352	242	204	194	206
85.0	46.8	68.9	135	199	206	195	192	55.5	43.4	39.7	27.9	40.3
90.0	23.3	18.1	28.0	22.5	41.2	27.5	23.2	29.4	22.7	28.1	23.5	28.2
95.0	24.9	19.8	23.6	18.3	23.4	18.6	23.5	28.9	26.0	30.2	26.8	30.3
100.0	27.2	23.0	25.5	21.4	25.0	21.7	27.0	31.5	29.6	33.0	30.4	33.0
105.0	29.8	26.1	27.9	24.6	27.3	24.8	30.6	34.2	33.2	35.9	33.8	36.0
110.0	32.6	29.1	30.4	28.0	29.8	27.8	34.0	37.0	36.3	38.9	36.8	38.8
115.0	35.3	31.8	32.8	31.2	32.3	30.7	37.2	39.6	39.2	41.7	39.6	41.3
120.0	37.4	34.0	35.1	33.9	34.4	33.4	39.8	41.9	41.7	43.8	42.1	43.5
125.0	39.4	36.2	37.4	36.2	36.6	35.8	42.2	44.2	44.1	45.7	44.5	45.7
130.0	41.2	38.4	39.3	38.4	38.7	37.9	44.3	45.9	46.4	47.5	46.5	47.7
135.0	43.0	40.6	41.3	40.2	40.6	40.0	46.4	47.6	48.2	49.3	48.3	49.2
140.0	45.1	43.2	43.3	42.4	42.8	42.2	48.2	49.4	49.8	50.8	50.0	50.6
145.0	47.1	45.5	45.5	44.8	44.8	44.4	50.1	50.9	51.4	52.5	51.2	52.0
150.0	49.3	47.6	47.8	47.1	47.0	46.6	52.1	52.5	53.1	54.2	52.8	53.6
155.0	51.8	49.8	50.0	50.0	49.5	48.9	54.4	54.4	54.8	56.1	54.5	55.0
160.0	54.1	51.9	51.9	52.8	51.8	51.2	56.5	56.1	56.2	58.2	56.1	56.4
165.0	56.4	53.7	54.0	55.2	53.8	53.4	58.3	57.6	57.3	59.9	57.3	57.5
170.0	58.4	55.4	56.0	57.5	55.4	55.5	59.8	58.4	58.0	61.0	57.9	58.4
175.0	59.8	56.4	57.4	59.1	56.4	56.8	60.9	58.7	58.1	61.3	57.8	58.4
180.0	60.6	57.4	58.1	60.2	57.4	57.6	61.1	58.2	57.9	61.0	57.3	58.2

Test System:HOPOO HPG1800
 Temperature:25.3DEG
 Operators:
 Test Date:2016年07月28日

Test Set: 8.0deg/s C-Gamma (TYPE C)
 Humidity:65.0%
 Test Distance:6.000 m
 Remarks: